

MONTHLY MEMBERSHIP PROGRESS REPORT

LOCATION INDIA

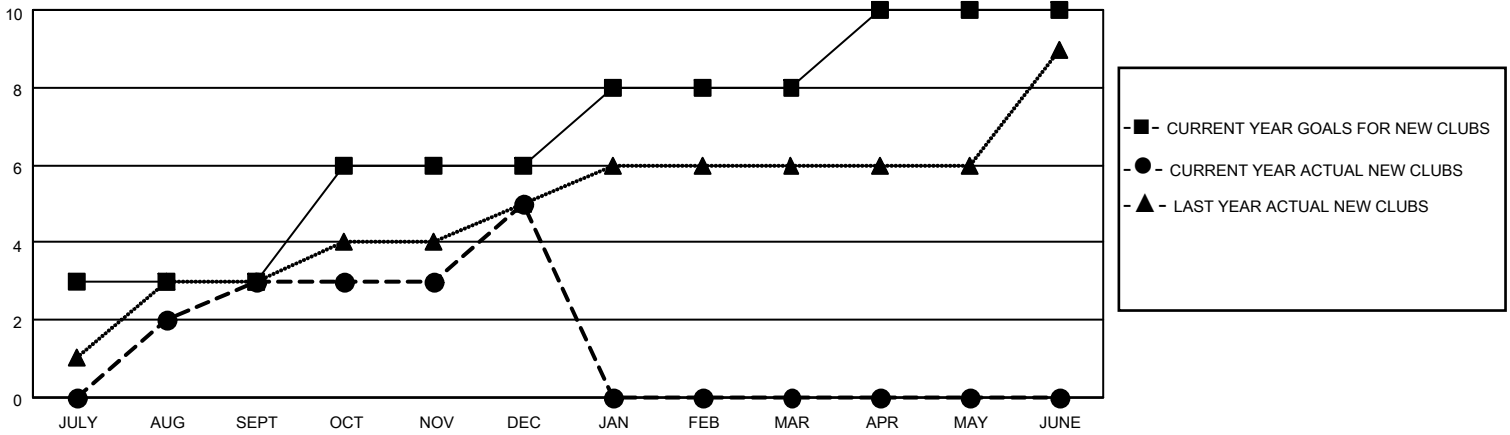
District 321C1

Results as of: 12/31/2022

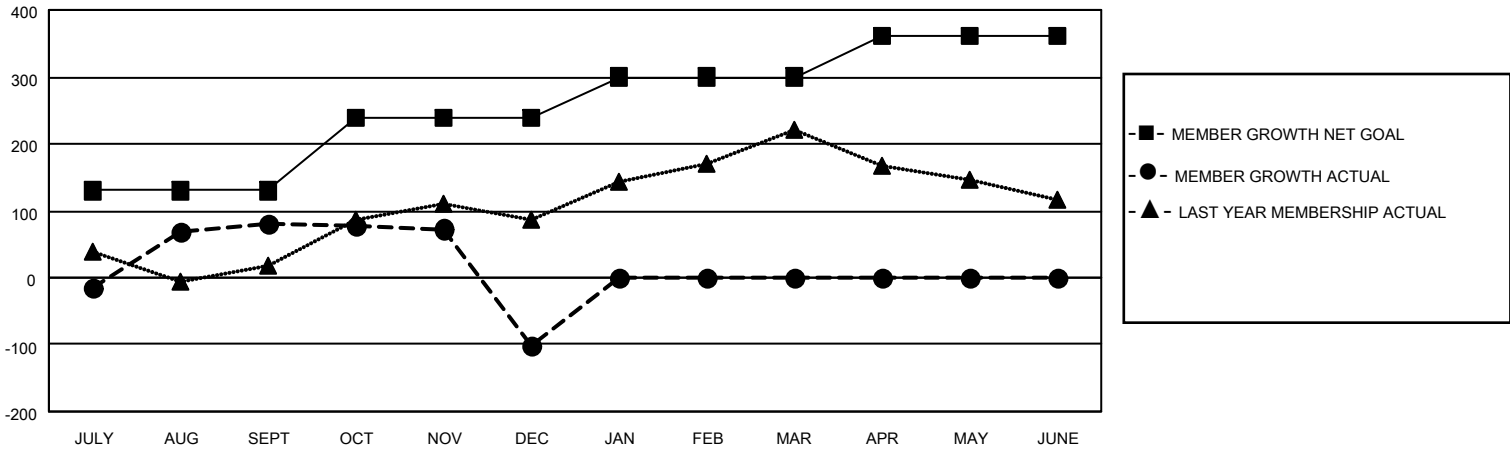
Clubs			
RESULTS FOR 2022-2023			
QUARTER	NEW CLUB GOAL	NEW CLUBS	DROPPED CLUBS
JULY/AUG/SEPT	3	3	0
OCT/NOV/DEC	3	2	6
JAN/FEB/MAR	2	0	0
APR/MAY/JUNE	2	0	0

Members			
RESULTS FOR 2022-2023			
QUARTER	MEMBER GROWTH NET GOAL	MEMBER GROWTH ACTUAL	DROPPED MEMBERS ACTUAL (including transfers)
JULY/AUG/SEPT	130	187	98
OCT/NOV/DEC	110	81	260
JAN/FEB/MAR	60	0	0
APR/MAY/JUNE	60	0	0

GOALS AND ACTUAL NEW CLUBS CUMULATIVE



GOALS AND ACTUAL MEMBERS CUMULATIVE



DROPPED CLUBS: 6	
<u>DROPPED MEMBERS</u>	
DECEASED	6
CLUB CANCELLED	77
OTHER	275
TOTAL	358

37 CLUBS OF 157 ADDED 1 OR MORE NEW MEMBERS

[CLICK HERE FOR CUMULATIVE MEMBERSHIP DATA](#)

<u>GENDER DISTRIBUTION</u>	
MALE	3,010 (66.84%)
FEMALE	1,490 (33.09%)
NON BINARY	0 (0.00%)
PREFER NOT TO ANSWER	3 (0.07%)
TOTAL FAMILY UNIT MEMBERS	2,323
FAMILY MEMBERS PAYING HALF DUES	1,246